

East Central Illinois & West Central Indiana Flood Alliance

Flood Insurance Rate Maps FEMA Mitigation Grants

Sally McConkey P.E. CFM

November 15, 2019



ILLINOIS

Illinois State Water Survey

PRAIRIE RESEARCH INSTITUTE

Illinois State Water Survey

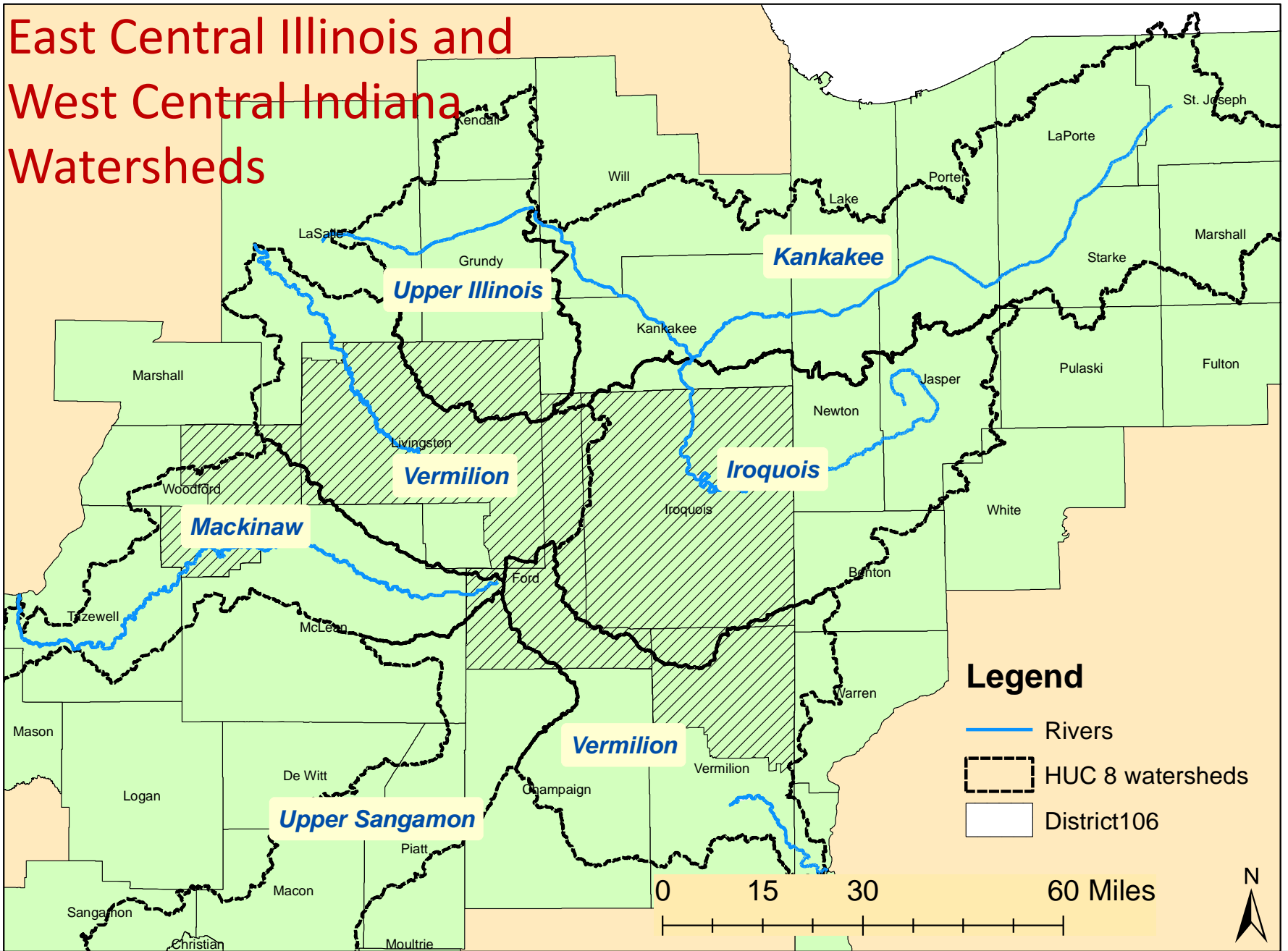
Coordinated Hazard Assessment and Mapping Program

Cooperating Technical Partner with Federal Emergency Management Agency

- Flood studies (hydrology and hydraulics)
- Floodplain maps
- Flood Risk Products (e.g. depth grids)
- Flood Risk Assessments
- Assistance with Hazard Mitigation Plans
- Community outreach

<http://www.illinoisfloodmaps.org/>

East Central Illinois and West Central Indiana Watersheds



Ford County Preliminary Digital Flood Insurance Rate Map

Maps show 1% (100 year) floodplains

- Urban areas: streams draining 1 square mile or more
- Rural areas: stream draining 10 square miles or more

Floodplains determined from base level hydrologic and hydraulic models

Orthophoto base maps

Used for National Flood Insurance Program (floodplain management and flood insurance)

Up to date flood hazard information for Ford County!

<https://www.fema.gov/view-your-communitys-preliminary-flood-hazard-data>

Preliminary FIRM Meetings

December 4, 2019

- Ford County Sheriff's Office and Jail, Board Room, 235 North American Street, Paxton, Illinois 60957
- 2:00 pm – 4:00 pm meeting for local officials
- 5:00 pm - 7:00 pm public meeting
- A thirty-day comment period ends January 2, 2020. You may either submit comments at the meeting or send comments to
Shelly Fuller, Illinois State Water Survey,
2204 Griffith Drive, Champaign, Illinois
61820.

U.S. Department of Homeland Security
FEMA Region V
536 South Clark Street, Sixth Floor
Chicago, Illinois 60605



October 21, 2019

The Honorable Daniel E. Dickey
Mayor, City of Gibson City
P.O. Box 545
Gibson City, Illinois 60936

IN REPLY REFER TO: Meeting Invitation
Community Name: City of Gibson City,
Ford County, Illinois
Community No.: 170234

RE: Meeting invitation to review the Preliminary Flood Insurance Rate Map (FIRM) and Preliminary Flood Insurance Study (FIS) Report for Ford County, Illinois and Incorporated Areas

Dear Mayor Dickey:

On December 4, 2019, the Illinois State Water Survey (ISWS), on behalf of the Federal Emergency Management Agency (FEMA), is hosting meetings to present the newly produced Preliminary Flood Insurance Rate Map (FIRM) and Flood Insurance Study (FIS) report for Ford County, Illinois and Incorporated Areas.

This project incorporates new engineering analyses on several streams which has resulted in new and modified Special Flood Hazard Area boundaries and flood insurance zone designations within the county. Although your community is not currently participating in the National Flood Insurance Program, portions of your community are impacted by the project.

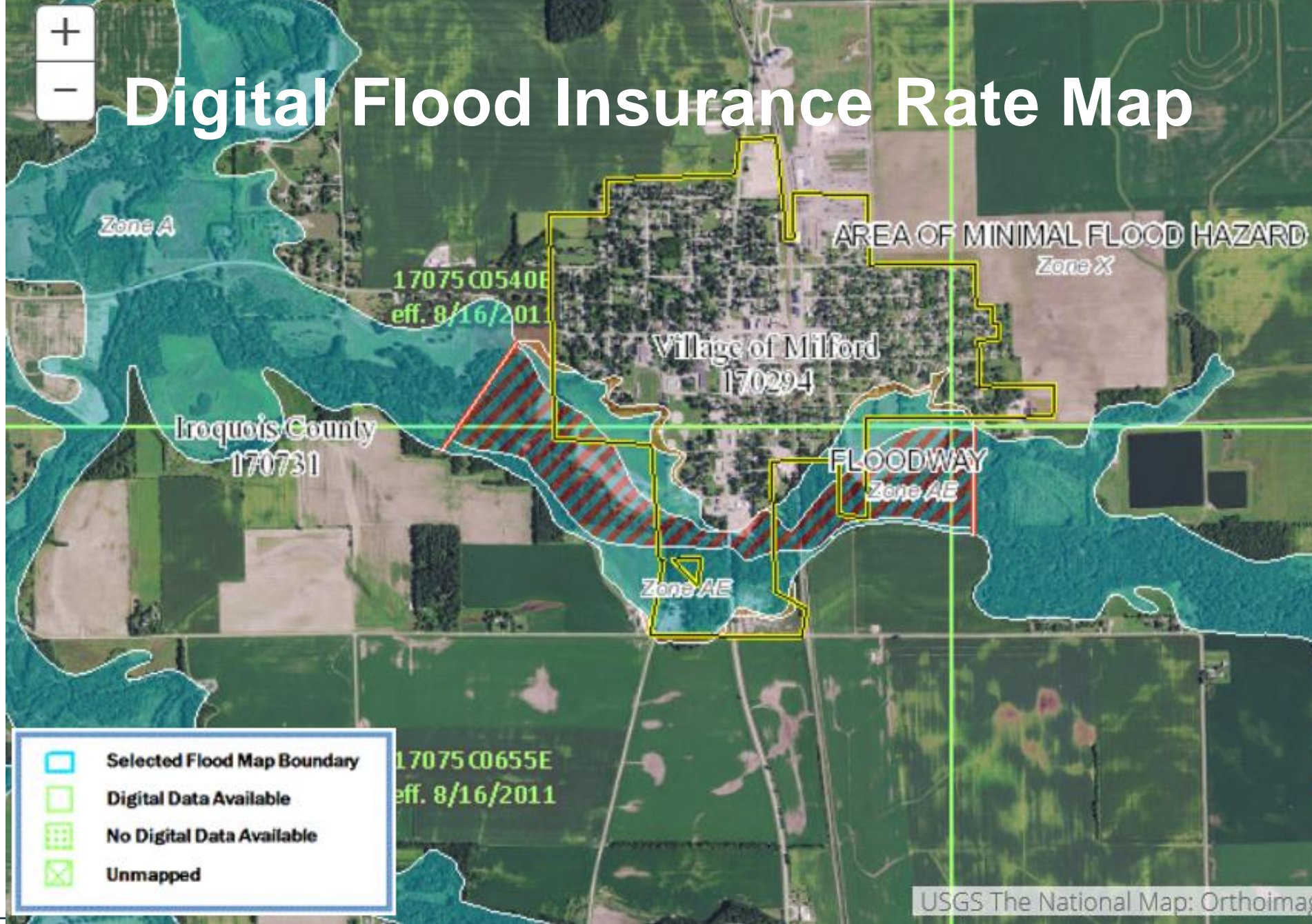
There will be two meetings, a formal "Consultation Coordination Officer (CCO)" Meeting for local government officials from 2:00 pm – 4:00 pm and an Open House for the public at large from 5:00 pm - 7:00 pm. The CCO Meeting will begin with a 20 minute presentation where we will review the history of the Ford County project; present the preliminary FIS and FIRM panels; review the changes incorporated; discuss the process of reviewing, appealing, and adopting the documents; and address other frequently asked questions. The presentation will be followed by free time to review materials and ask questions of our staff. You and/or a technical member of your staff are invited to attend the CCO Meeting and are welcome to stay for the evening Open House. The location is the Ford County Sheriff's Office and Jail, Board Room, 235 North American Street, Paxton, Illinois 60957.

The public Open House is scheduled from 5:00 pm - 7:00 pm at the same location. At this session staff will be available to help citizens locate their properties on the FIRM and to answer questions. These staff members will offer expertise in engineering, Geographic Information Systems (GIS), floodplain mapping, floodplain management, Letters of Map Change, FEMA administrative procedures, and flood insurance. Citizens living in or near areas of special flood hazards are encouraged to attend. ISWS will promote the meeting, but also requests your help getting the word out to the public. We encourage you to promote the Open House on your web site, via social media, and at community sponsored events. You may also want to contact impacted property owners by letter. It is also helpful to pass this information on to your own media contacts. In an effort to assist you in circulating the information, FEMA has posted digital copies

www.fema.gov



Digital Flood Insurance Rate Map



FEMA Map Service Center



Navigation

Search

Languages

FEMA Flood Map Service Center: Search By Address

Enter an address, place, or coordinates: ?

iroquois county illinois

Search



Whether you are in a high risk zone or not, you may need [flood insurance](#) because most homeowners insurance doesn't cover flood damage. If you live in an area with low or moderate flood risk, you are 5 times more likely to experience flood than a fire in your home over the next 30 years. For many, a National Flood Insurance Program's flood insurance policy could cost less than \$400 per year. Call your insurance agent today and protect what you've built.

Learn more about [steps you can take](#) to reduce the risk flood damage.

Search Results—Products for IROQUOIS COUNTY UNINCORPORATED AREAS

[Show ALL Products »](#)

The flood map for the selected area is number **17075C0525E**, effective on **08/16/2011** ?

DYNAMIC MAP



PRINT MAP/
FIRMette

MAP IMAGE



DOWNLOAD
FIRM PANEL

Changes to this FIRM ?

- Revisions (0)
- Amendments (0)
- Revalidations (0)

- MSC Home
- MSC Search by Address
- MSC Search All Products
- MSC Products and Tools
 - Hazus
 - LOMC Batch Files
 - Product Availability
- MSC Frequently Asked Questions (FAQs)
- MSC Email Subscriptions
- Contact MSC Help

Illinois State Water Survey

<http://illinoisfloodmaps.org/>

<https://mrcc.illinois.edu/>

FEMA Map Service Center

<https://msc.fema.gov/portal/home>

USGS Current Water Data for Illinois

<https://waterdata.usgs.gov/il/nwis/rt>

National Weather Service – forecasts

<https://water.weather.gov/ahps/forecasts.php>